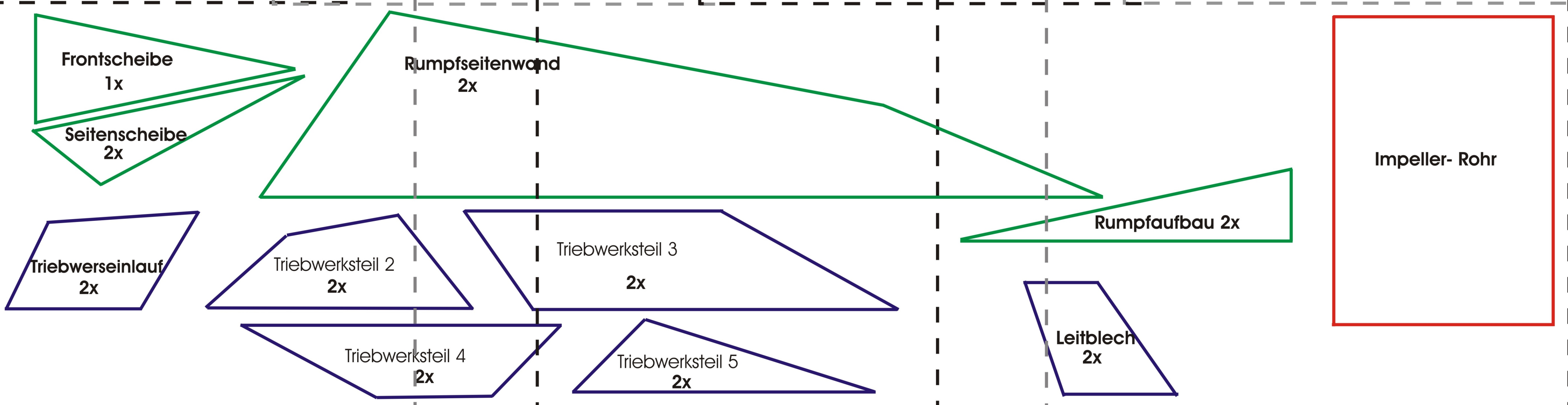
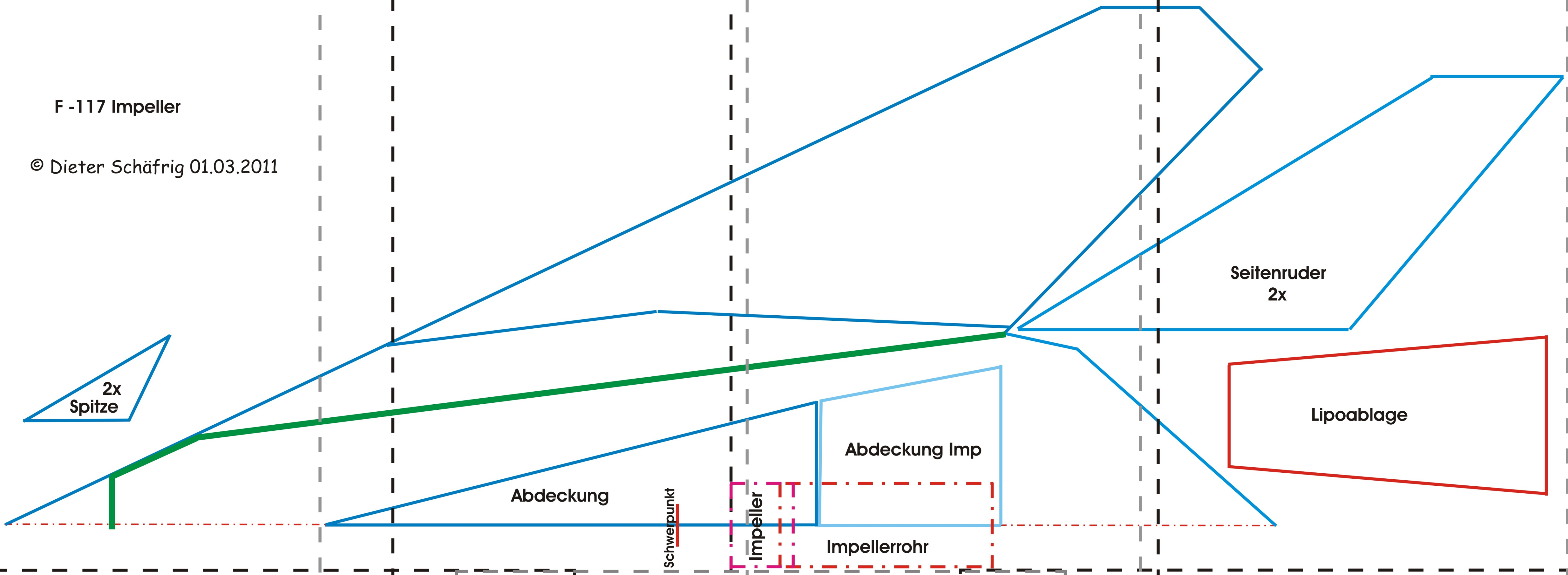


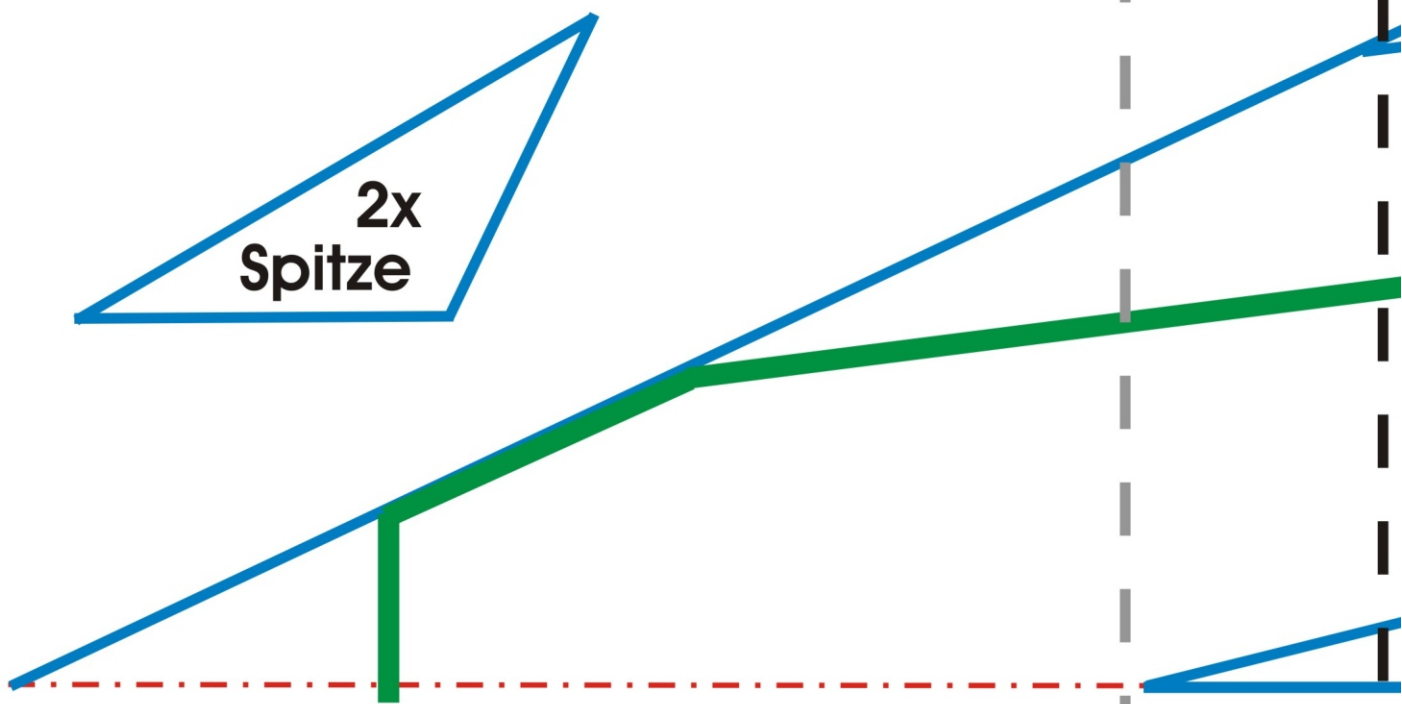
F -117 Impeller

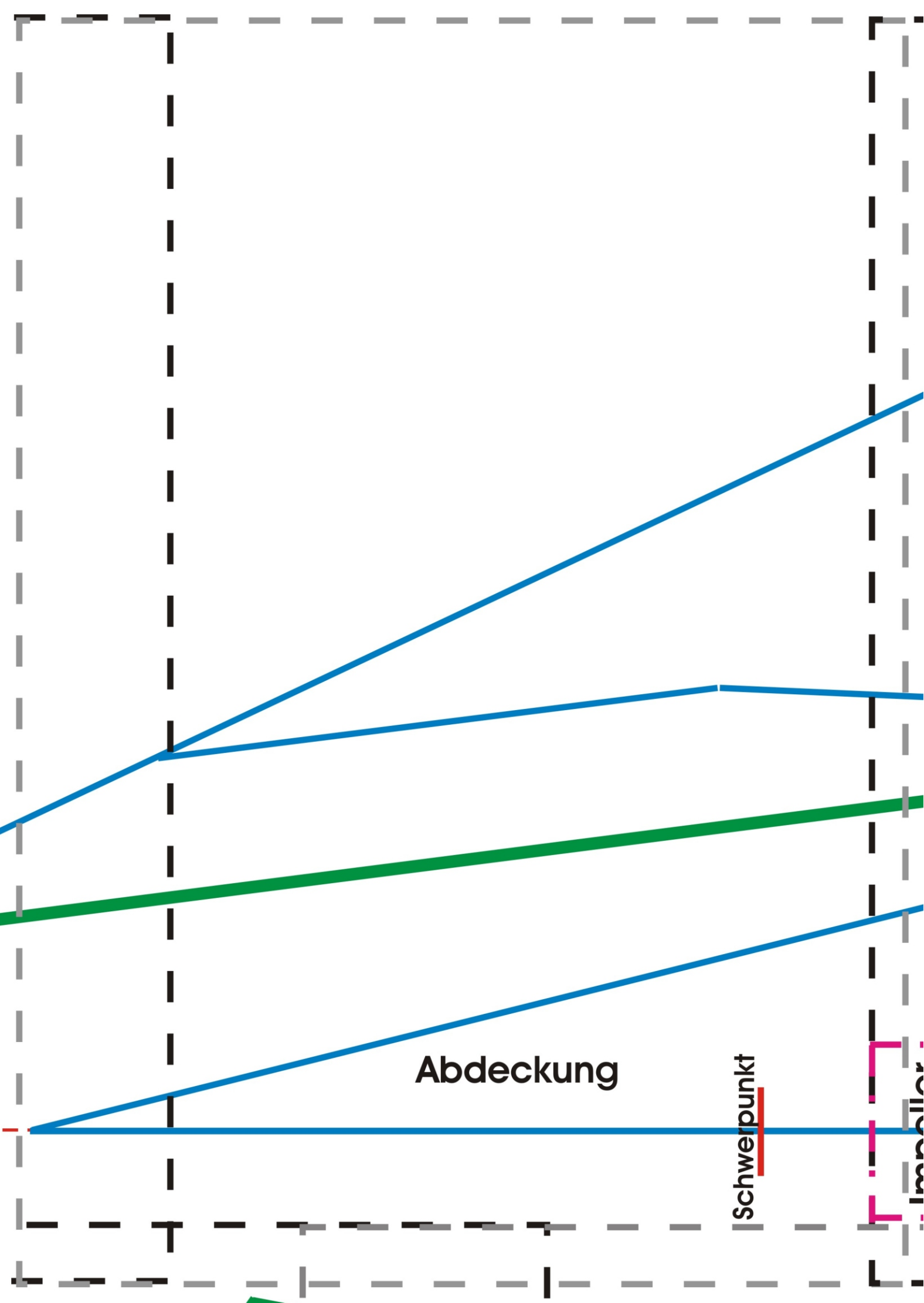
© Dieter Schäfrig 01.03.2011

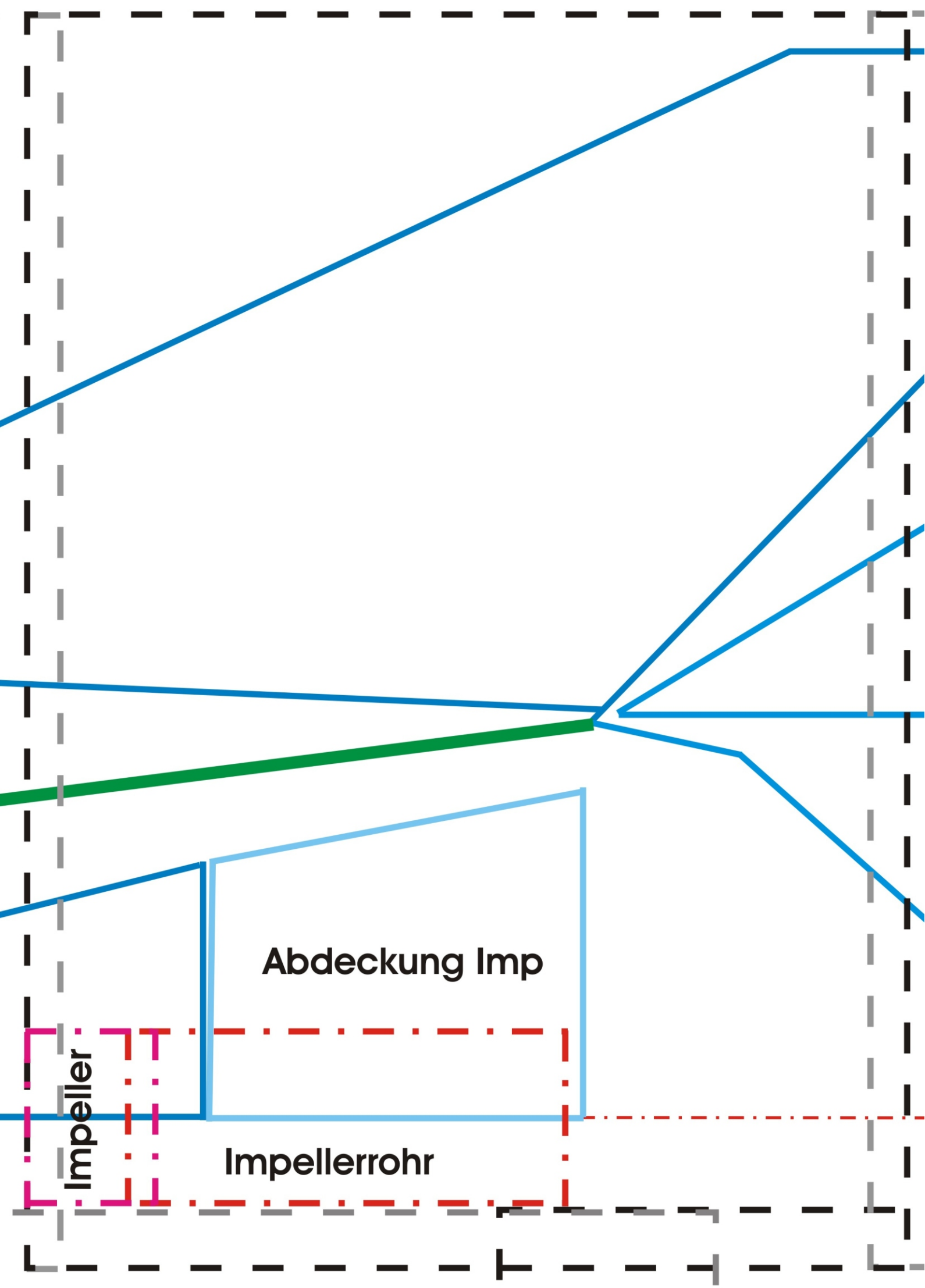


F -117 Impeller

© Dieter Schäfrig 01.03.2011



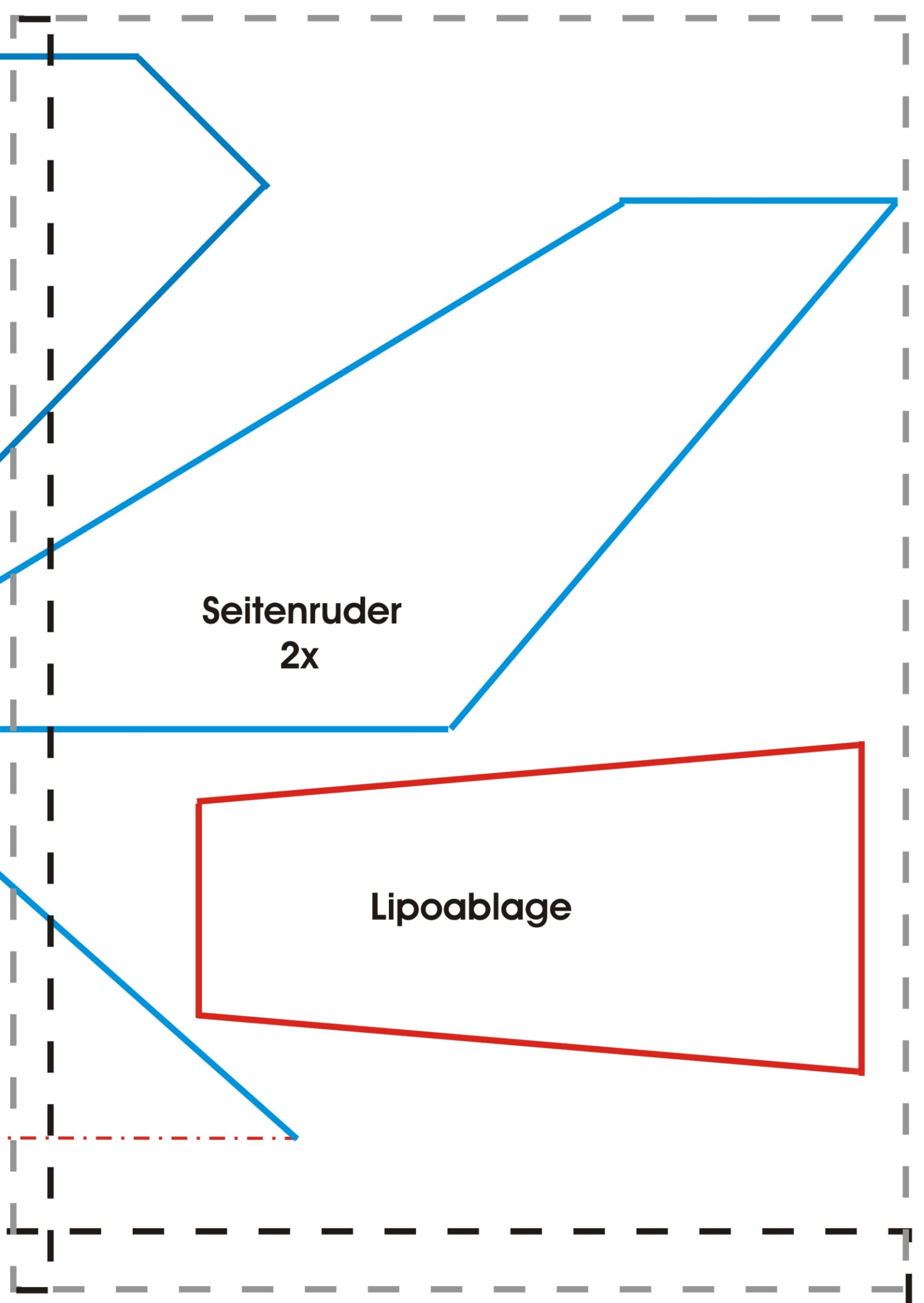




Impeller

Abdeckung Imp

Impellerrohr



**Seitenruder
2x**

Lipoablage

The diagram shows an exploded view of a mechanical assembly. It features a green component at the top, a purple component at the bottom, and a central grey component. The green component consists of a front plate, side plates, and a main housing. The purple component consists of an inlet, two intermediate parts, and a final part. The central grey component is a main housing. The entire assembly is enclosed in a dashed rectangular frame.

Frontscheibe

1x

Seitenscheibe

2x

Rumpfseitenwand

2x

Triebwarseinlauf

2x

Triebwerksteil 2

2x

Triebwerksteil 4

2x

Rumpfseitenwand

2x

Triebwerksteil 3

2x

Triebwerksteil 4

2x

Triebwerksteil 5

2x

